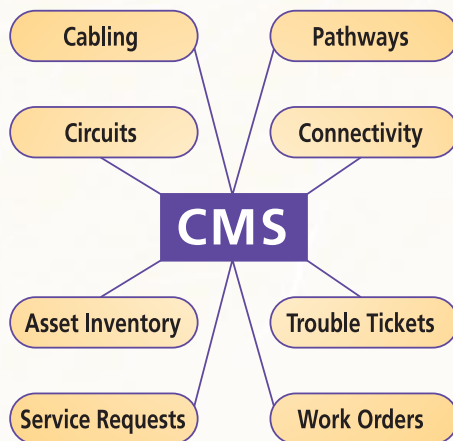


Cable and Asset Management Software

A Cable Management System is software designed to maintain and administer a building's cabling and equipment. It documents and manages accurate records of all details associated with cable installations.

If you have 500 outlets or more, you need a Cable Management System (CMS). Take a moment to consider how many outlets there are in your building – jacks for electricity, phone lines, data ports – and think about all the equipment that's plugged into them. How do you know which jacks are operational, what they are called and what they are connected to? Is that jack connected to the new phone system or the old cabling for the previous switch? Are moves, adds and changes time-consuming, arduous and tedious?

This complete software system provides management and reports for:

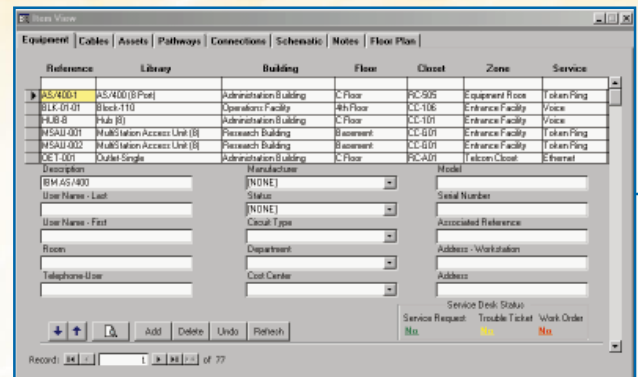


Cable, Circuit, and Asset Management

TelSoft Solutions offers a comprehensive cable management software system that documents and manages the circuits and physical connectivity for a wide range of network topologies including ATM, Ethernet, twisted pair, structured cabling, Token Ring, fiber, Voice, and FDDI in single or multi-building network cable plants.

The system can store information for multiple buildings or campuses and show views by floor, closet and zones. Specific information such as port or pair assignments, network addresses, PBX port and circuit connections are easily entered to match the level of detail required.

The system offers more than just information about networks and communications systems, it is an excellent tool to manage and control other items of equipment or fixtures that are not directly related to circuit connectivity. Asset management may



Easy to navigate screens display all actions for Cable Management. By selecting the Equipment, Cable, Assets or Pathways tab, a list of current items are displayed showing the Reference, Library Type, Building, Floor, Closet, Zone and Service in a column format. Each tab presents the same view for each Item Type.



be divided into several functions including inventory control, financial accountability and ownership assignment. The user can easily define terminology and equipment to document systems such as electrical wiring, water pipes, air ducts, alarm and video systems, providing complete asset management and control. This includes separate groupings for organizing Equipment, Cables, Pathways and Assets. It also allows customizable fields that can be used to describe and record related asset information.

- Maintain permanent records of physical location and connections for every circuit
- Quickly troubleshoot and isolate cable and equipment failures
- Record the equipment, cables and pathways for the cable plant
- Identify space capacity while planning major moves and changes
- Eliminate duplicate purchases by accurately tracking inventory
- Assign expenses to cost centers and track costs
- Detailed technical documentation, photos and any graphic information attach via OLE, providing additional manufacturer-specific information

To centralize information, the system can interface with logical network management systems, cable testing and cable labeling systems, help desk, call accounting and other facility management tools.

Cable and Asset Management Software

Service Desk

The system includes full Service Desk Management for Service Requests, Trouble Tickets and Work Orders.

- Pre-plan moves and changes which are automatically documented with Work Orders
- Real-time updates ensure that Work Order changes are instantaneously reflected in the database
- Work Orders can be associated with a Service Request or Trouble Ticket or can be independent



- Accelerate installation by quick location of unassigned cable pairs or equipment connections
- Reduce costs and downtime completing work orders

- Return to full service quickly by documenting Cables, Circuits and Equipment at any level of detail.

Service Requests:

Service Requests are used to record events that require a planned change regarding the current location, connectivity, equipment or cabling. Examples are the addition of new software or the change of telephone handset features.

Trouble Tickets:

Trouble Tickets are used to record events that require a technician to review a problem that may affect the current location,

An independent survey recently showed that businesses move, add to or change at least 30% of their cable plant each year at a typical cost of \$1000 to \$1500 for minor changes. 80% of the time and cost of such changes are spent in "finding things rather than fixing things"!

connectivity of equipment or cabling. Examples are the inability to connect to the network, static on a telephone line or no dial tone.

Work Orders:

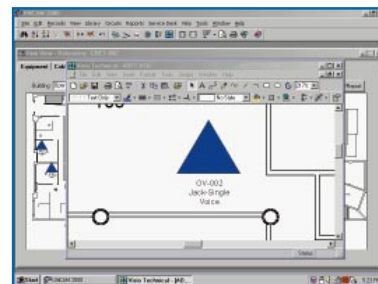
Work Orders are used to record events that require a technician to perform Move, Add or Change (MACs) activities that affect the current location, connectivity of equipment or cabling. Examples are the relocation to a new Building or Floor or the addition of data and telephone services for a new employee.

Whether it is for simple modifications (when a user moves), complex extension or re-wiring projects, the system simplifies the whole Move, Add and Change process.

It allows the user to make changes to the data and optionally update the database, or hold the changes in a pending Work Order. These Work Orders can then be reviewed and printed as instructions for the technician. When the work is complete, the pending Work Order is used to update the database automatically.

Integration with Visio Technical

This system provides a direct interface to Visio Technical that links the relationship between each database item and the Visio SmartShapes that appear on any CAD-based drawing.



Typically, floorplan drawings are transferred from AutoCad in a DWG or DXF file format and are displayed in Visio with complete layer control. Then the drawings are assigned to the building and floor structure created in the database. The database items are represented by any Visio SmartShapes symbol and automatically placed in the correct floorplan drawing. Drag and Drop features provide for exact location placement.

To find out more about the many features and benefits of a Cable & Asset Management System, contact TelSoft Solutions.



100 N. Brand Blvd. Suite 400, Glendale, CA 91203
800-525-4845 • www.telsoft-solutions.com
cms@telsoft-solutions.com